

Taken to Access

Volume 6, Issue 3 * March 2017



WOMEN'S HISTORY MONTH

Question of the Month:

Q. **Is the Nurse Call Pull Cord Station in a toilet required to comply with both the 48" AFF to the top of the device and the 12" min clearance above the grab bar per CBC 11B-609.3?**

R. **No**, the Nurse Call Pull Cord Station is **not** required to meet the 48" AFF to the top of the device. The public accesses only the cord, not the device itself. Only the staff accesses the device itself to reset it.

The Pull Cord Station is required to not protrude greater than 1/4" within the 12" clearance above the grab bar (PAC Newsletter May 2015 [link](#)). See below for required clearance in red. In the photos, both the Pull Cord Station box (photo A) and a piece of the device (photo B) protrudes more than 1/4" within the 12" clearance. Both devices require correction.

In honor of Women's History Month, we are highlighting a few intriguing women who have contributed to the disabled community through awareness, education and advocacy. For more amazing women around the world, see the UN Women Women of Achievement website ([link](#)).

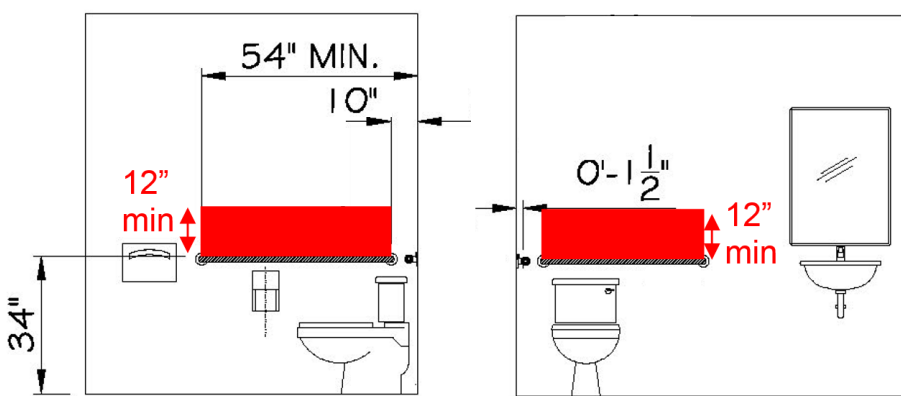


Temple Grandin is a world-renowned autism spokesperson. "She is one of the first individuals on the autism spectrum to publicly share insights from her personal experience of autism." (source: Wikipedia). Temple provides awareness that autistic people see the world differently and encourages ways to augment their unique viewpoints. Learn more at her website ([link](#)) and inspirational TED Talk ([link](#)).

Sue Austin is a "British disabled artist working in multimedia, performance and installation. She is best known for her work "Creating the Spectacle!" in which she uses a specially modified wheelchair to move underwater." (source: Wikipedia) Check out her website ([link](#)) and TED Talk with mesmerizing video ([link](#)).



Johnnie Lacy was a "leader in the independent living movement and fought for the rights of people with disabilities, especially people of color. She led Community Resources for Independent Living, a nonprofit in Hayward providing services and advocacy. As a Black woman in a wheelchair, she educated her communities about race and disability and served as a role model for many other Black disabled women." (source: [link](#)). Read more about her extraordinary activism [here](#) and [here](#).



Source: PAC H2-105 Toilet Room Grab Bars ([link](#))

